

Welcome

Congratulations on your purchase of a Mountain Buggy carrycot.

We know how precious and inspiring a new little person can be in your world. It's so important to be able to show your baby to the world and just as important to show the world to your baby.

At Mountain Buggy you and your baby matter to us. That's why we have spent years researching and developing a product that is safe, comfortable and in tune with modern parents needs. We want you to be able to live your new family lifestyle with all the freedom and satisfaction you have always experienced.

We also know that many parents use strollers incorrectly and as a result may put their children at risk. Please take the time to read through this manual carefully. Your Mountain Buggy carrycot will provide you with optimum safety if you follow the instructions as detailed.

If you have any concerns, questions or comments about your Mountain Buggy carrycot or how to use it, please do not hesitate to contact us. We'd love to hear from you.

Fitting a carrycot to your buggy is simple. However, it is important to follow the correct instructions.



FOR THE SAKE OF YOUR PRECIOUS PASSENGER, PLEASE READ THESE WARNINGS BEFORE USING YOUR MOUNTAIN BUGGY CARRYCOT.



Important:

Please read instructions carefully, follow them strictly and keep these instructions for future reference. Your child's safety is your responsibility and may be compromised if you do not follow these instructions.



Warning

- Carrycot is suitable for newborns through to 6 months old, or until baby can sit up unaided.
- Baby must not be in Carrycot when it is being fastened or removed from the stroller frame.
- Depth from top of mattress to top of side of Carrycot at any position within 300mm/11.8in from harness attachment points, should not be reduced to less than 150mm/5.5in when mattress is in position. Mattresses purchased separately should conform to BS 1877 part 10.
- Do not add a mattress thicker than 25mm.
- Check snap locks are closed and firmly attached to frame so Carrycot will not tip or fall.
- Check Carrycot is horizontal and located correctly onto stroller frame. Refer back to diagrams for your model to ensure positioning of snap locks is correct.
- Do not use Carrycot if you are unable to secure it to stroller frame. In this case contact store where stroller was purchased for more help.
- Check that Carrycot attachment devices are correctly engaged before use.
- Always remove Carrycot before folding stroller.

Preparing your stroller to fit the Carrycot

Before you can attach the Carrycot to your stroller you will need to remove the fabric sunhood and seat on your stroller.

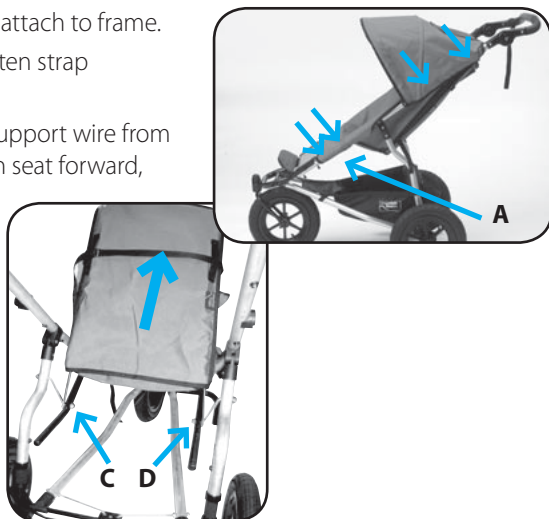
Removing the Sunhood

1. Standing beside your stroller and using a reasonable degree of force, pull the sunhood support wire towards you (by about 50mm/2in).
2. Remove support wire W from sunhood bush J on the side nearest to you.
3. Unfasten sunhood domes that attach the sunhood to stroller frame and to stroller seat back.



Removing the Seat

1. Unfasten domes on seat that attach to frame.
2. **Urban (Jungle) Only:** unfasten strap underneath seat at point A.
3. **Terrain Only:** remove seat support wire from stroller frame at C and D. Push seat forward, then slide fabric off seat support wire.



Preparing your stroller (continued)

IMPORTANT INFORMATION FOR DOUBLE AND TRIPLE STROLLERS

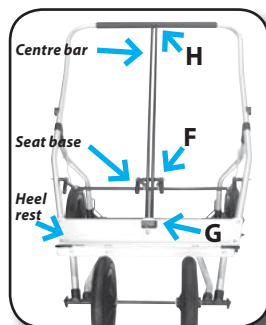
If you have a double or triple stroller you will need to remove the centre metal bars of the frame to release the domed fabric. You may then need to reattach the metal bars without the fabric, depending on whether you are attaching a Double or a Twin Carrycot. See chart below.

NOTE: Urban Double strollers from 2008 onward have a wider opening at the top of the bars to allow the domes to be threaded through easily. If you have a stroller of this type, the bars only need to be removed if a twin carrycot is being added.



How to remove the centre bar(s)

- Terrain only:** undo seat base nut with a spanner at point F and remove hinge pin from seat base.
- Urban and Terrain models:** unfasten wing nut at point G and remove centre bar at both ends (points G and H).



	Double Stroller Frame	Triple Stroller Frame
Twin Carrycot	No centre bar	No centre bar on side attaching Twin Carrycot. Centre bar remains on side not accommodating Twin Carrycot.
Double Carrycot	Centre bar required. Remove hammock fabric from seat you wish to replace with Carrycot.	Centre bar required. Remove hammock fabric from seat you wish to replace with Carrycot. Double Carrycot can only be fitted to outside seat positions.

Fitting your Carrycot to your stroller

Mountain Buggy offer a range of carrycot and stroller combinations, so please choose the instructions you need to follow from the list below based on which carrycot model you are wanting to attach to which stroller.

	Single Stroller	Double Stroller	Triple Stroller
Single Carrycot	Configuration 1		
Double Carrycot		Configuration 2	Configuration 2
Twin Carrycot		Configuration 1	Configuration 2

Instructions for Configuration 1 are located on pages 6-7

Instructions for Configuration 2 are located on pages 8-10

Examples of Carrycot combinations



Double Stroller with
2 Double Carrycots



Double Stroller with
Twin Carrycot



Triple Stroller with
1 Double and 1 Twin
Carrycot

Configuration 1 instructions

))) PLEASE FOLLOW THESE INSTRUCTIONS IF YOU ARE FITTING:

a: a Single Carrycot to a Single Stroller

b: a Twin Carrycot to a Double Stroller

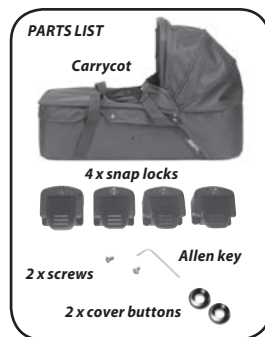
Fitting the Snap Locks to the Carrycot

Preparation

You will need to have all components on the parts list shown to fit Carrycot to your stroller.

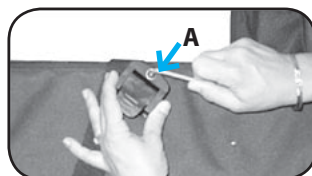
Have a look at sides of Carrycot. There are three holes on each side of Carrycot to allow snap locks to be fitted. Configuration varies depending on the Mountain Buggy model you have.

- Two snap locks are fitted to each side of Carrycot. The unused hole can be fitted with the spare screw and cover button.



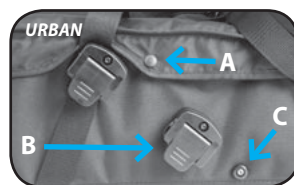
How to fit the Snap Locks

1. Place one snap lock over hole A. Make sure it is aligned correctly with the hole in Carrycot.
2. Using Allen key, rotate screw in snap lock in clockwise direction until screw is tight. Snap lock will still be able to rotate but is firmly attached.
3. Connect second snap lock according to model directions below.
4. Repeat on other side.



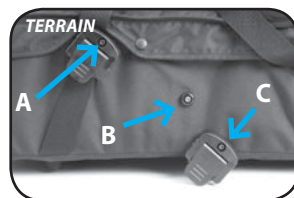
For Urban (Jungle) models

5. Fit second snap lock to position B.
6. Fit small screw and cover button to hole C.



For Terrain Models

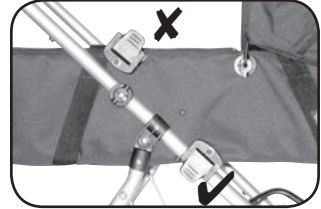
5. Fit second snap lock to position C.
6. Fit small screw and cover button to hole B.



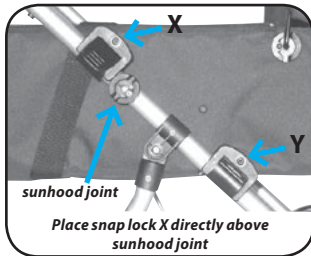
Configuration 1 instructions (continued)

Fitting the Carrycot to the Frame

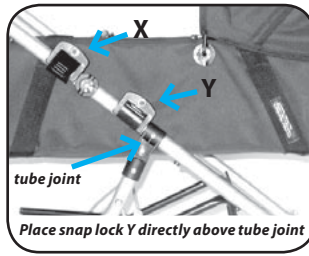
1. Ensure snap locks are rotated so screw holes are on top.
2. Open snap locks.
3. Place Carrycot onto Buggy frame. Confirm positioning as pictured below.



TERRAIN



URBAN



4. Push snap locks firmly down flat, making sure you hear the lock 'click', indicating they are fully locked.

Fitting the Feet to the Carrycot

1. Take one foot and place provided screw through hole in narrow end of foot.
2. Screw whole unit into one of the 4 holes located on bottom of Carrycot.
3. Ensure foot is screwed tightly.
4. Repeat process for all 4 feet.



To remove: unscrew each foot from bottom of Carrycot.

Configuration 2 instructions

))) PLEASE FOLLOW THESE INSTRUCTIONS IF YOU ARE FITTING:

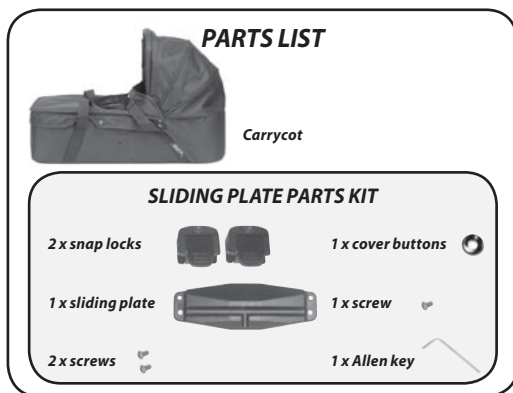
- a:** a Double Carrycot to a Double Stroller
- b:** a Double Carrycot to a Triple Stroller
- c:** a Twin Carrycot to a Triple Stroller

Fitting the Snap Locks and Slider Plate to the Carrycot

Preparation

Make sure you have all the necessary parts as outlined in this picture.

NB: The sliding plates part kit is not supplied with a twin carrycot and will need to be separately purchased to attach the twin to a triple stroller. Also note that the snap locks used in Configuration 1 are different from those used in this instruction.

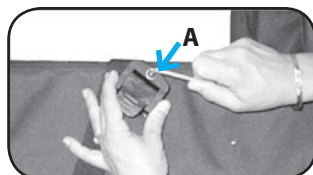


Work out which side you want to attach the Carrycot to. If you want to position the Carrycot onto the right side of stroller, put the snap locks onto the right side of the Carrycot and the sliding plate onto the left. To position the Carrycot onto the left side of the stroller the snap locks go on the left side of the stroller and the sliding plate on the right.

NB: Left and right are considered from the point of view of the user when they are pushing the stroller.

Attaching Snap Locks

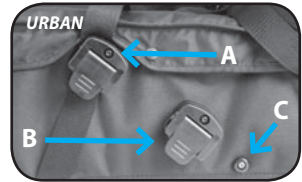
1. Place one snap lock over hole A. Make sure it is aligned correctly with the hole in Carrycot.
2. Using Allen key, rotate screw in snap lock in clockwise direction until screw is tight. Snap lock will still be able to rotate but is firmly attached.
3. Connect second snap lock according to model directions for Urban or Terrain.



Configuration 2 instructions (continued)

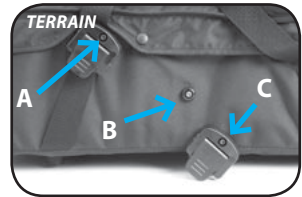
For Urban (Jungle) models

5. Fit second snaplock to position B.
6. Fit small screw and cover button to hole C.



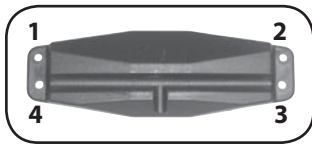
For Terrain Models

5. Fit second snap lock to position C.
6. Fit small screw and cover button to hole B.



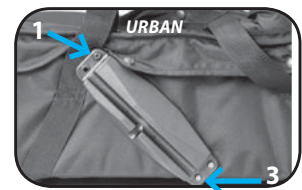
Fitting the Sliding Plate to the Carrycot

- Position sliding plate on opposite side of Carrycot to snap locks.
- Sliding plate screws are located at Holes A and C in side of Carrycot. Hole B is not required.
- There are 4 screw holes in sliding plate. Use diagram below to locate which two holes are required for your stroller model.



Urban

- Align Hole 1 of sliding plate with Hole A of Carrycot. Align Hole 3 of sliding plate with Hole C of Carrycot.
- Place screws into Holes 1 and 3. Using Allen key, tighten in a clockwise direction.



Configuration 2 instructions (continued)

Terrain

- Align Hole 1 of sliding plate with Hole A of Carrycot. Align Hole 2 of sliding plate with hole C of Carrycot.
- Place screws into Holes 1 and 2. Using Allen key, tighten in a clockwise direction.

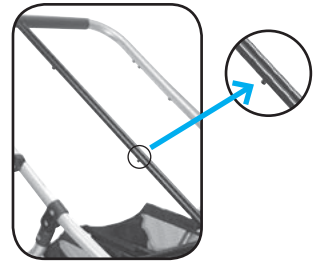


Warning: check that Carrycot attachment devices are correctly engaged before use.

.....

Fitting the Carrycot to the Frame

1. Ensure snap locks are rotated so screw holes are on top.
2. Open snap locks.
3. Place Carrycot between side tube and centre bar of stroller. Locate centre bar lug then move sliding plate down centre bar until groove in sliding plate locks onto located lug.
4. Push snap locks firmly down flat, making sure you hear the lock 'click', indicating they are fully locked.



To fit a second Double Carrycot onto a Double or Triple Stroller repeat above instructions.

To remove Carrycot from frame: open snap locks and lift Carrycot off frame.

.....

Fitting the Feet to the Carrycot

1. Take one foot and place provided screw through hole in narrow end of foot.
2. Screw whole unit into one of the 4 holes located on bottom of Carrycot.
3. Ensure foot is screwed tightly.
4. Repeat process for all 4 feet.



To remove: unscrew each foot from bottom of Carrycot.